



*Welcome to*  
**PARADISE**

 **RAS  
VILLAS**  
LUXURY HOMES

A 3D architectural rendering of a modern, light-colored stone entrance gate. The gate features a central square panel with the 'RAS VILLAS LUXURY HOMES' logo. The gate is flanked by a paved driveway and a road with a car. The background shows a clear blue sky and lush greenery.

 **RAS  
VILLAS**  
LUXURY HOMES



## *Where excellence finds home*

RG City Developers (P) Ltd. is a dynamic, bold and visionary real estate company. It is fully managed by Director of RAS Developments Pvt. Ltd. Its diverse real estate portfolio covers world class residential township, premium and affordable residential complexes, commercial spaces, luxury retail malls, hotel, healthcare, institutional building and more. Our passion and drive has given shape to residential apartments in karnal that are elegant heavens with spark of vibrancy. RAS Developments has emerged as a key player in a very short time due to its dedication in delivering the very best.



A close-up photograph of a hand holding a small, green, moss-covered house-shaped object. The object is made of a dense, fibrous material, possibly moss or a similar natural material, and has a simple house shape with a chimney on the right side. The hand is holding it from the top, with fingers visible. The background is a blurred field of green plants, suggesting a natural, outdoor setting. The overall tone is bright and green, emphasizing nature and sustainability.

*green living*

# GREEN VILLAS

---

The moment you enter Ras Villas, you will encounter spectacle of greenery that will enrich and elevate your living. Highly specialized landscaping will ensure that you stay connected with nature.

# ENVIRONMENTALLY FRIENDLY HOMES



- Environment Friendly Living with Inhouse Sewage Treatment Plant for usage of treated water for gardening.
- Rain water harvesting for optimum usage of rain water for multiple purposes

**ABUNDANT DENSE GREEN AREA**  
**40% LUSH GREEN AREA**



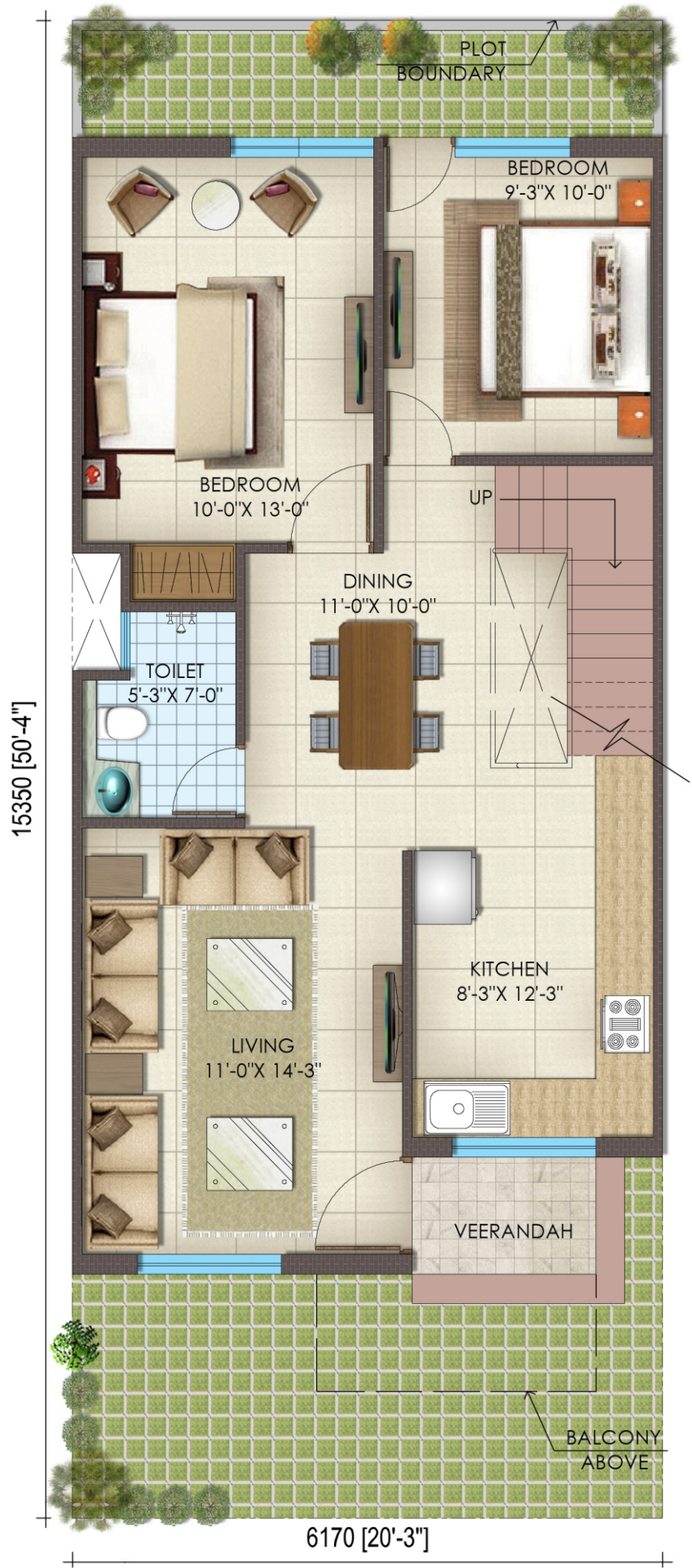
## *The palette*

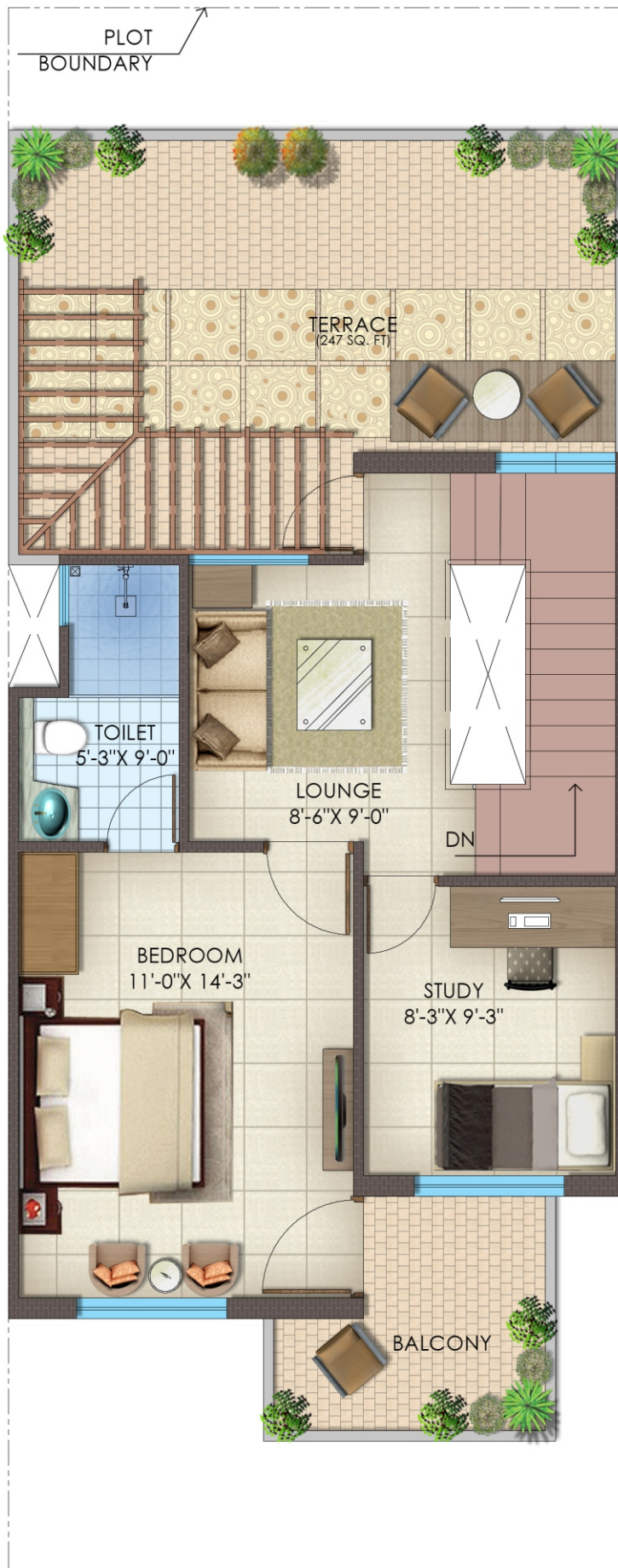
Ras Villas is one of the most impeccable creations of RG City Developers. It is situated amidst the poshest localities and bank upon on NH1. It is an offering the amalgamates life and beauty through it's rare mix of living spaces.

Designed and facilitated with upmost modern and stylish feature, Ras Villas offer the best in class life style... An endeavor you would yearn to be part of.









PLOT SIZE- (6.17X15.35)SQ. MT  
PLOT AREA = 113.26 SQ. YARDS  
CARPET AREA = 1055 SQ. FT

BUILT UP AREA			
GROUND FLOOR	FIRST FLOOR	BALCONY	TOTAL
(SQ.FT)	(SQ.FT)	(SQ.FT)	(SQ.FT)
733	415	63	1211

FIRST FLOOR PLAN

(TYPE-C)

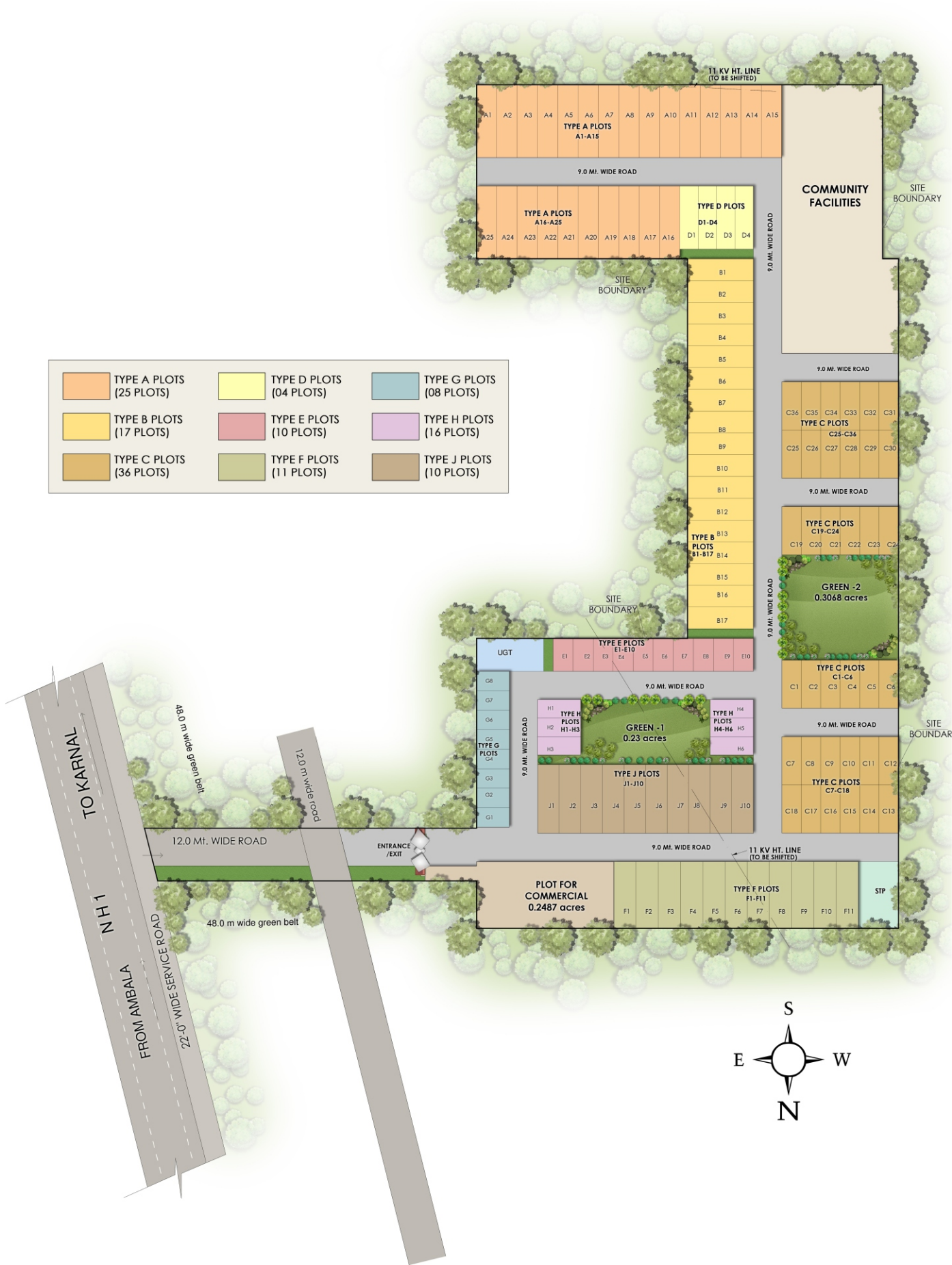


PLOT SIZE- (7.06X21.22)SQ. MT  
PLOT AREA = 179.15 SQ. YARDS  
CARPET AREA = 1016 SQ. FT  
BUILT UP AREA = 1090 SQ. FT

# OWN A PRIME ADDRESS ON NH 1

Ras Villas is Located in Tarori on NH1 - a highway that connects Delhi and Chandigarh.





SITE PLAN

FROM CHANDIGARH



## LOCATION ADVANTAGE

- 0 Mins From NH1
- 3 Mins From KARAN LAKE
- 5 Mins From NEW BUS STAND
- 6 Mins From KARNAL
- Adjoining Bus Stop Side



0 Km from mall



0 km from NH1



0 Km from school



0 Km from store



1.5 Kms from hospital



1.5 Kms from station



100 Kms from airport

## Strategic Location

- NH1 connects Delhi and Chandigarh

- 40% Open Space • High-End Luxury Features & Facilities



## *Luxurious living*

Opulence and grandiosity find a new name at RAS Villas. Indulge your senses in the finest amenities that make for the ideal lifestyle, everything you desire in your dream home is what you will find here.





## GREEN SPACE AND PARK

---

well maintained park and green space



## SPLASH WATER MUSHROOM

---

a water feature which enhances the aesthetics



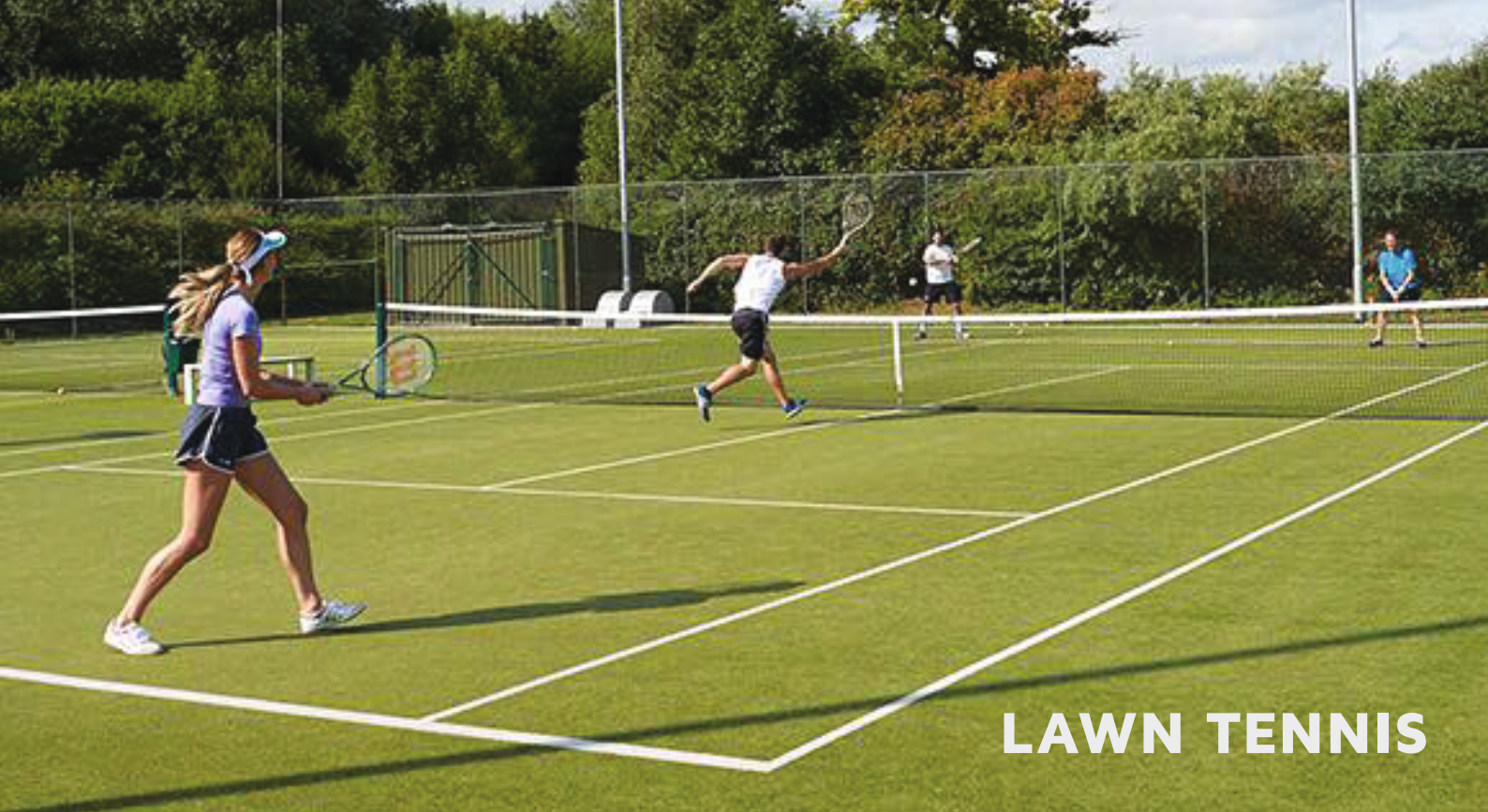
## CLUBING FACILITIES

---

a class club house offering recreational facilities



**GREEN SPACE & PARK**



## LAWN TENNIS

### *Play Zone*

Sports and recreation are indispensable when it comes to ensuring a disciplined and healthy lifestyle. However, today's gruelling work culture and technology-driven existence poses enormous risks to urban citizens, who are compelled to choose between health and career. Realising its importance, R G City, too, have incorporated amenities in RAS Villas to facilitate better well-being of its residents. Some of these facilities include Lawn Tennis Court, Basketball Court, Badminton Court and recreational amenities.



## BADMINTON



**OPEN AIR GYM**



**BASKETBALL COURT**

# PROJECT HIGHLIGHTS

Bank on NH1

Gated Community with CCTV Camera

Lush green area



No EDC/IDC/Hidden Charges

Swimming Facility

Games ( Basketball, Badminton, Lawn Tennis & Open Air GYM)




Bank loan Available under PMAY Scheme

PROJECTS



Aerens  
Palm Residency

KING'S  
COUNTY  
RAS Residency, Sec. 35 - Karnal  
LIFE, KING SIZE



RAS  
Basera

RAS  
Residency  
HOME FOR EVERYONE  
RAS RESIDENCY, KARNAL

palm  
residency  
an oasis of fine living  
PALM RESIDENCY, FARIDABAD



RG CITY DEVELOPERS PVT. LTD  
Corporate Office: 812-812A, Chiranjiv Tower  
43, Nehru Place, New Delhi-19  
011-46525031, 011-46082242  
info@rasvillas.com | www.rasvillas.com



REGISTERED OFFICE: 812-812A, Chiranjiv Tower  
43, Nehru Place, New Delhi-19  
011-46525031, 011-46082242  
info@rasindia.net | www.rasindia.net

Licence No :- 54 of 2018 dated 14. 08. 2018 for 7.26875 acres in favor of RG City Developers (P) Ltd. to set up an affordable residential plotted colony under Deen Dayal Jan Awas Yojana Total number of plots 127. Project approved from HRERA vide memo no:- HRERA 423/ 2018 Disclaimer:- the content of this brochure are purely conceptual and do not represent in any manner a legal offering promise. The owner, designated architects and consultant reserve the right to delete, alter, change or replace ant details, specifications without notice.